

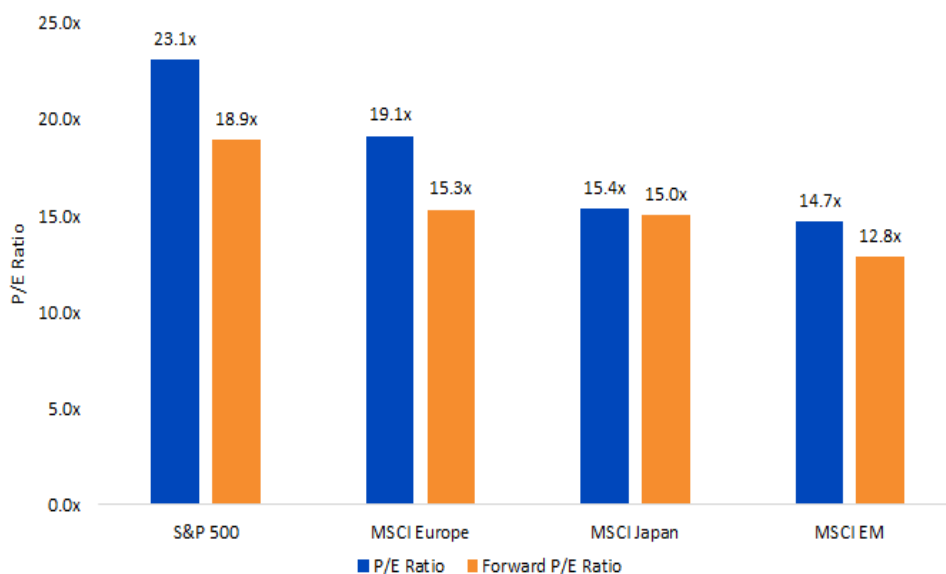
WHY WE SEE VALUE IN SOMETHING THAT IS NO LONGER VALUE

Joseph Tenaglia – Director, Model Portfolios
01/08/2018

Barring unforeseen circumstances, later this January marks the two-year anniversary of the start of the current emerging markets (EM) [bull](#) market. Since bottoming out on January 21, 2016, the [MSCI Emerging Markets Index](#) has rallied an impressive 70%.¹ While some investors may be becoming hesitant on the asset class after the expansion in [valuations](#), we see others remaining bullish on its outlook.

As [value](#) investors, we are constantly assessing asset valuations and searching for where the best opportunities exist. Looking across the globe right now, we think EM still represents the best equity valuation opportunity on an absolute and relative basis.

Global Equity Index Valuations



Sources: WisdomTree, FactSet, as of 11/30/17. Past performance is not indicative of future results. You cannot invest directly in an index.

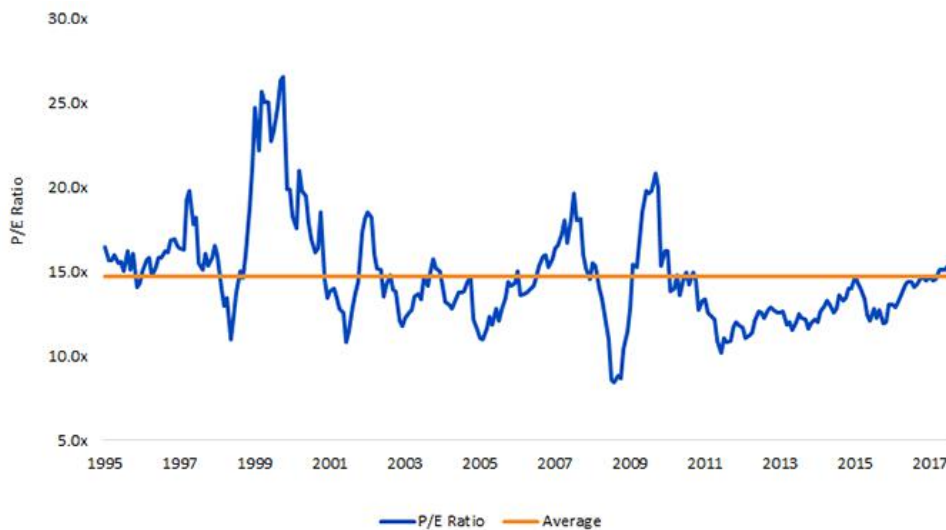
Value Is More Than Just a Number

That said, context is needed to tell the whole story. Value investing requires more than just looking at a group of numbers at a given point in time and selecting the smallest one.

EM is currently trading almost exactly at its long-term average [P/E ratio](#) dating back to

the mid-1990s—a span of time that includes periods of boom and bust for the asset class. Even with the 70% rally over the last two years, EM is right at its historical fair value.

MSCI EM Index Historical Valuations



Sources: WisdomTree, FactSet, as of 11/30/17. Past performance is not indicative of future results. You cannot invest directly in an index.

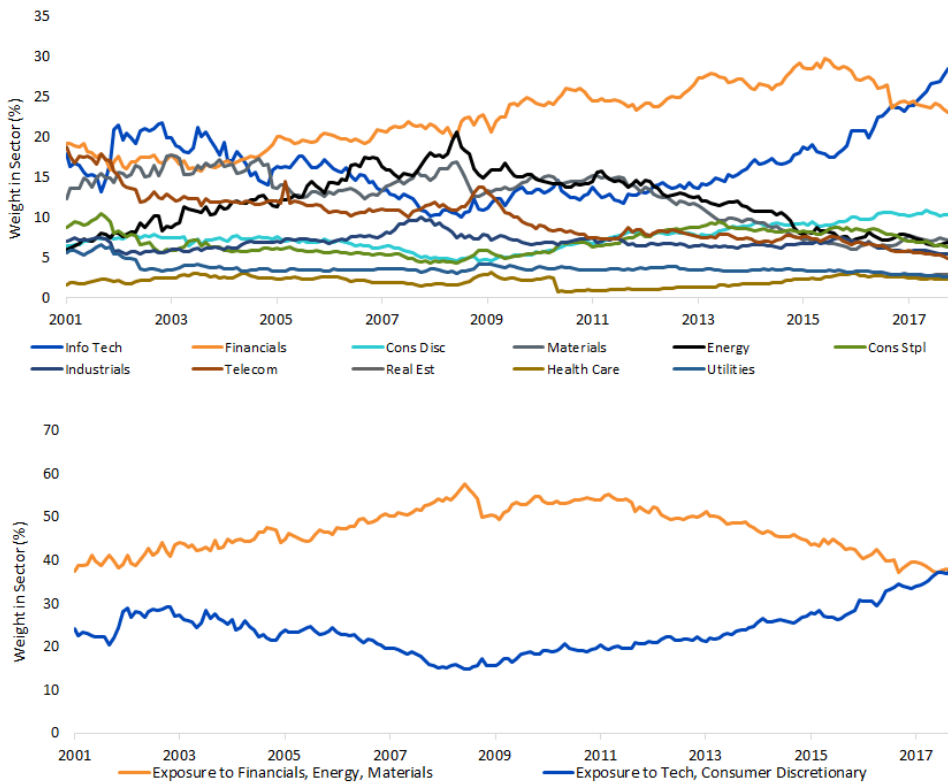
Equity Transformation Leading Economic Transformation

While EM's current valuation paints a picture of fair value, we think there's a more important story taking place beneath the surface that isn't receiving enough recognition. Much fanfare has been made about the gradual transition within EM from the old economies to new ones, but less ink has been spilled on the fact that the equity markets have already seen this transformation take place.

For much of its history, the EM equity asset class was dominated by some of the sectors that are traditionally associated with value investing—Financials, Energy and Materials (the latter two being the primary commodity-linked sectors). This was particularly true during the mid-2000s commodity super cycle, when those three sectors combined for a whopping 58% weight in the Index at their peak.² In recent years, the asset class has matured to one with larger exposures in the new economy sectors that are more closely aligned with [growth](#) investing—namely Tech and Consumer Discretionary.

In fact, this past September, the combined weight in those two growth sectors surpassed that of the three value sectors for the first time—a trend that certainly looks like it may continue. What was long seen as a value asset class that was reliant on commodities has finally made the leap into the long-awaited play on the EM consumer growth story.

Composition of MSCI EM Index Dynamically Shifting



Sources: WisdomTree, Bloomberg, as of 11/30/17. Past performance is not indicative of future results. You cannot invest directly in an index. Holdings subject to change.

Buying Growth at Value Prices

Back to valuations. Today we find ourselves comparing EM’s current valuation to its own history—a history of being a value-dominated asset class. The composition of the Index has clearly changed to an equity market that is driven by growth, but the current and historical valuation levels are the exact same.

Therefore, we see value in EM because it is no longer value. Put another way, imagine if the [Russell 1000 Growth Index](#) were trading at the historical [P/E ratio](#) of the [Russell 1000 Value Index](#).”

Given this evolution, in our view, historical valuation comparisons understate the real value being offered by EM. Even after the run since January 2016, we believe EM equities still represent a fantastic value opportunity on an absolute, relative AND historical basis.

And while valuation alone is not a catalyst, there are a few potential tailwinds in the coming months that we’re monitoring closely:

- Strong projected earnings growth this year (with consensus growth at around 13%)³
- Continued easy policy from most EM central banks
- Strengthening EM currencies that still look undervalued on a [PPP](#) basis
- Near-universal improvement in financial accounts from 2013 levels

- An expected acceleration in the global and EM [GDP](#) growth rates

With all that in mind, we have reason to remain bullish on EM going into 2018.

Best Ideas for 2018

In terms of portfolio implementation, we like a few themes for 2018. These include the continued rally in large tech names that have high expected earnings growth; accessing local economy exposure with the pickup in EM GDP growth; and India, arguably our favorite long-term story, as the impact of [demonetization](#) and the [GST bill](#) rolls off.

The [WisdomTree Emerging Markets ex-State Owned Enterprises Fund \(XSOE\)](#) has over-weight positions in Tencent, Alibaba and Baidu, each of which has long-term [EPS](#) growth expectations above 22%.⁴ The [WisdomTree Emerging Markets SmallCap Dividend Fund \(DGS\)](#) derives 81% of its revenues from within emerging markets⁵ and should benefit from a pickup in internal economic activity. Finally, The [WisdomTree India Earnings Fund \(EPI\)](#), which celebrates its 10-year anniversary in February, takes our patented earnings-weighted approach to magnify the impact the top earnings generators have on the total strategy. Looking ahead, we think each of these strategies is well positioned to effectively capture the changing dynamics of the asset class.

¹Source: Bloomberg, as of 11/30/17.

²Source: Bloomberg, on 6/30/08.

³Source: Merrill Lynch, as of 11/28/17.

⁴Source: Bloomberg, as of 12/11/17. Over-weight positions compared to MSCI EM Index. Please click [\[here\]](#) for a list of XSOE holdings.

⁵Source: FactSet, as of 11/30/17.

Important Risks Related to this Article

There are risks associated with investing, including possible loss of principal. Foreign investing involves special risks, such as risk of loss from currency fluctuation or political or economic uncertainty. Investments in emerging, offshore or frontier markets are generally less liquid and less efficient than investments in developed markets and are subject to additional risks, such as risks of adverse governmental regulation, intervention and political developments. Funds focusing their investments on certain sectors, smaller companies, and/or regions increase their vulnerability to any single economic or regulatory development. This may result in greater share price volatility. Investments in currency involve additional special risks, such as credit risk and interest rate fluctuations. The Funds may invest in the securities included in, or representative of, its Index regardless of their investment merit and the Fund does not attempt to outperform its Index or take defensive positions in declining markets. As some of the Funds may have a high concentration in some sectors, they may be adversely affected by changes in those sectors. Due to the investment strategy of certain Funds it may make higher capital gain distributions than other ETFs. Please read each Funds' prospectuses for specific details regarding each Funds' risk profile.

For standardized performance and the most recent month-end performance click [here](#) NOTE, this material is intended for electronic use only. Individuals who intend to print and physically deliver to an investor must print the monthly performance report to accompany this blog.

For more investing insights, check out our [Economic & Market Outlook](#)

View the online version of this article [here](#).

IMPORTANT INFORMATION

U.S. investors only: Click [here](#) to obtain a WisdomTree ETF prospectus which contains investment objectives, risks, charges, expenses, and other information; read and consider carefully before investing.

There are risks involved with investing, including possible loss of principal. Foreign investing involves currency, political and economic risk. Funds focusing on a single country, sector and/or funds that emphasize investments in smaller companies may experience greater price volatility. Investments in emerging markets, currency, fixed income and alternative investments include additional risks. Please see prospectus for discussion of risks.

Past performance is not indicative of future results. This material contains the opinions of the author, which are subject to change, and should not to be considered or interpreted as a recommendation to participate in any particular trading strategy, or deemed to be an offer or sale of any investment product and it should not be relied on as such. There is no guarantee that any strategies discussed will work under all market conditions. This material represents an assessment of the market environment at a specific time and is not intended to be a forecast of future events or a guarantee of future results. This material should not be relied upon as research or investment advice regarding any security in particular. The user of this information assumes the entire risk of any use made of the information provided herein. Neither WisdomTree nor its affiliates, nor Foreside Fund Services, LLC, or its affiliates provide tax or legal advice. Investors seeking tax or legal advice should consult their tax or legal advisor. Unless expressly stated otherwise the opinions, interpretations or findings expressed herein do not necessarily represent the views of WisdomTree or any of its affiliates.

The MSCI information may only be used for your internal use, may not be reproduced or re-disseminated in any form and may not be used as a basis for or component of any financial instruments or products or indexes. None of the MSCI information is intended to constitute investment advice or a recommendation to make (or refrain from making) any kind of investment decision and may not be relied on as such. Historical data and analysis should not be taken as an indication or guarantee of any future performance analysis, forecast or prediction. The MSCI information is provided on an “as is” basis and the user of this information assumes the entire risk of any use made of this information. MSCI, each of its affiliates and each entity involved in compiling, computing or creating any MSCI information (collectively, the “MSCI Parties”) expressly disclaims all warranties. With respect to this information, in no event shall any MSCI Party have any liability for any direct, indirect, special, incidental, punitive, consequential (including loss profits) or any other damages (www.msci.com)

Jonathan Steinberg, Jeremy Schwartz, Rick Harper, Christopher Gannatti, Bradley Krom, Tripp Zimmerman, Michael Barrer, Anita Rausch, Kevin Flanagan, Brendan Loftus, Joseph Tenaglia, Jeff Weniger, Matt Wagner, Alejandro Saltiel, Ryan Krystopowicz, Jianing Wu, and Brian Manby are registered representatives of Foreside Fund Services, LLC.

WisdomTree Funds are distributed by Foreside Fund Services, LLC, in the U.S. only. You cannot invest directly in an index.

DEFINITIONS

Bullish: a position that benefits when asset prices rise.

MSCI Emerging Market Index: The MSCI Em (Emerging Markets) Index is a free-float weighted equity index that captures large and mid cap representation across Emerging Markets (EM) countries.

Value: Characterized by lower price levels relative to fundamentals, such as earnings or dividends. Prices are lower because investors are less certain of the performance of these fundamentals in the future. This term is also related to the Value Factor, which associates these stock characteristics with excess returns vs the market over time.

Price-to-earnings (P/E) ratio: Share price divided by earnings per share. Lower numbers indicate an ability to access greater amounts of earnings per dollar invested.

Growth: Characterized by higher price levels relative to fundamentals, such as dividends or earnings. Price levels are higher because investors are willing to pay more due to their expectations of future improvements in these fundamentals.

Russell 1000 Growth Index: A measure of the large-cap growth segment of the U.S. equity universe, selecting from the Russell 1000 Index.

Russell 1000 Value Index: A measure of the large-cap value segment of the U.S. equity universe, selecting from the Russell 1000 Index.

Purchasing power parity: Academic concept stating that exchange rates should adjust so that equivalent goods and services cost the same across countries, after accounting for exchange-rate differences.

Gross domestic product (GDP): The sum total of all goods and services produced across an economy.

Demonetization: The act of stripping a currency unit of its status as legal tender..

GST Bill: India's Goods and Services Tax Bill aimed at streamlining the country's tax system.

Earnings per share: Total earnings divided by the number of shares outstanding. Measured as a percentage change as of the annual Index screening date compared to the prior 12 months. Higher values indicate greater growth orientation.